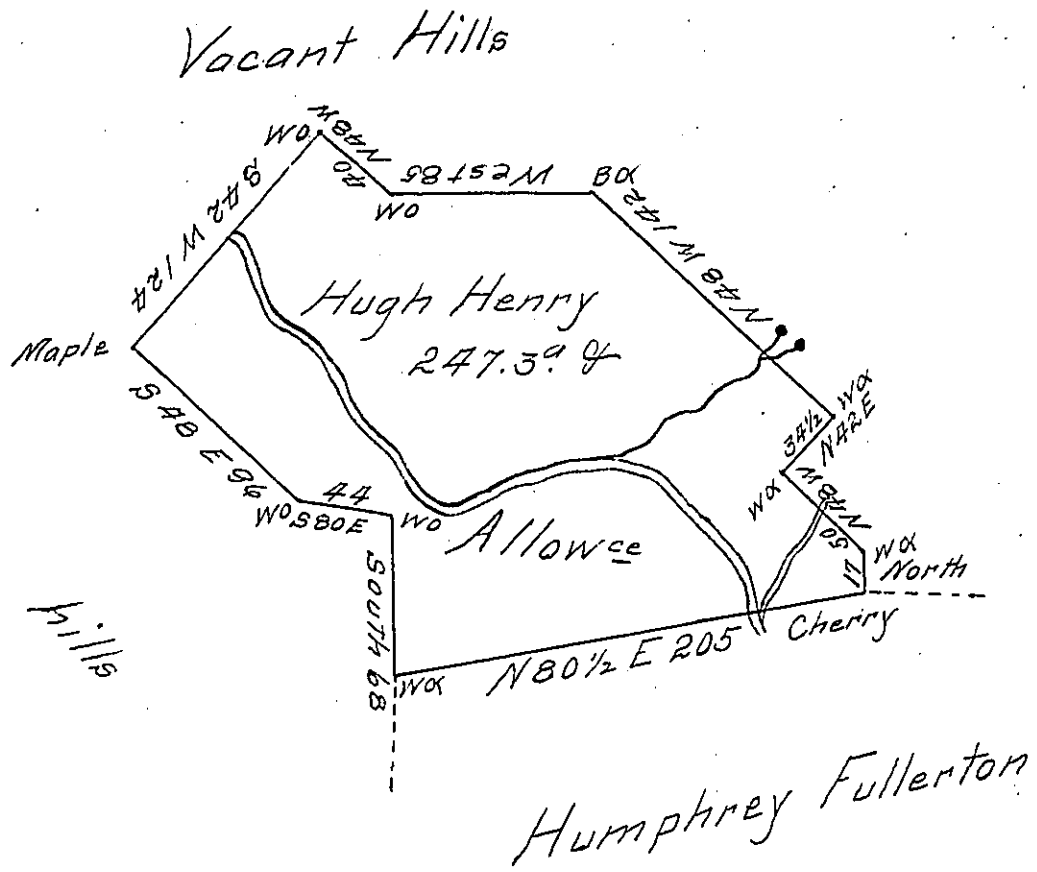


FORM NO 1.



Survey'd to Hugh Henry on the 1st Day of June 1775
 The above Described Tract of Two hundred forty seven
 Acres & a Quarter of an Acre & Allowance of Six p. Ct
 Situate on a Branch of the Allegeny below & adjoining
 Land of Humphrey Fullerton in Westmorland County
 By Warrant of the 23^d July 1773

Ⓟ Joshua Elder D.S.

To John Lukens Esq. S. Genl

IN TESTIMONY that the above is a copy of the original remaining on file in
 the Department of Internal Affairs of Pennsylvania, made
 conformably to an Act of Assembly approved the 16th day of
 February, 1833, I have hereunto set my Hand and caused
 the Seal of said Department to be affixed at Harrisburg,
 this Fifteenth day of July 1908

Henry Houck
 Secretary of Internal Affairs.